



PROJECT

SPEC TYPE

NOTES



IP20

IP55



E26



GENERAL INFORMATION:

Globo is a best seller family of Cerchio Lighting whole production: it makes the factory famous in all over the world. This family of table and floor lamps is realized in polyethylene, with the technology of rotational moulding. Its simple spherical shape creates magic and evocative atmosphere: it is elegant, contemporary and trendy. The linear and minimal design and the soft light make Globo ideal to private houses and contract. Globo is available also in hanging, outdoor use and wall versions.

FINISHING:

Lighting white

BODY:

Polyethylene

@ < HB ; . '

E26

E26

APPLIANCE CLASS:

II



WWW.BULLARDCOLLECTION.COM

OUTDOOR

TECHNICAL

DECORATIVE



WE WELCOME ALL CUSTOM ORDERS

Contact Us:

sales@gordonbullard.com

www.cerchiolighting.com

1 877-964-4646

| |
|-----------|
| PROJECT |
| SPEC TYPE |
| NOTES |

HOW TO ORDER:

CODE

Example:

CODE: SL-G70-D70-65W-IN-GF-PIC003-TUB0010-OG

SL-G70

1 DIAMETER:

-D70

-D70 Ø 27.56" (70 cm)

2 LIGHT SOURCE:

-65W

-65W E 26 - 1x max. 65W



3 LOCATION:

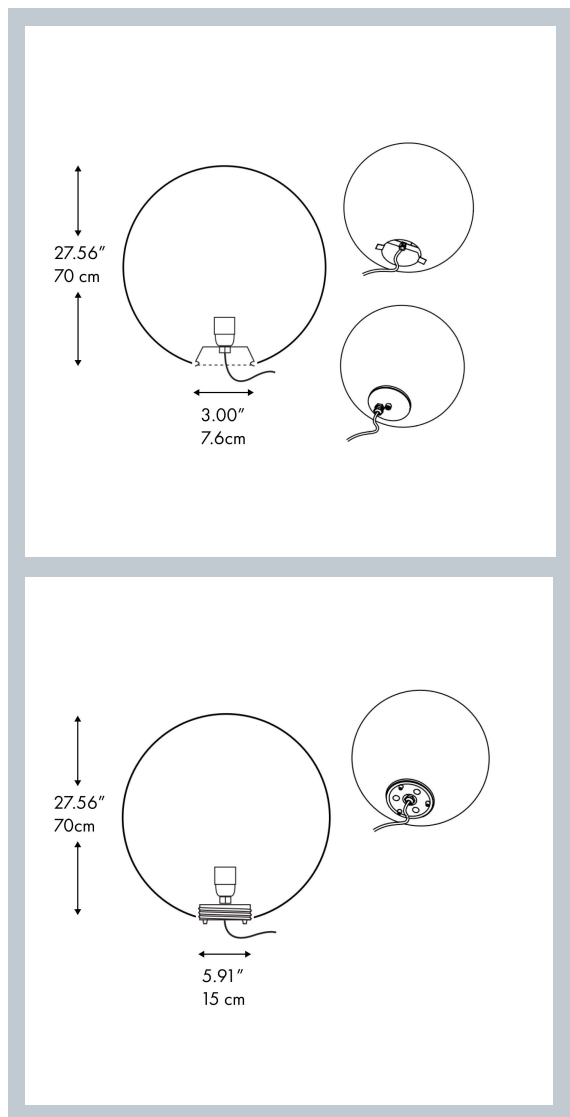
-IN IN

-OUT OUT

4 FINISH OPTIONS:

-GF Glossy Finish

-MF Matt Finish



IP20

IP55



E26

WWW.BULLARDCOLLECTION.COM

OUTDOOR

TECHNICAL

DECORATIVE



WE WELCOME ALL CUSTOM ORDERS

Contact Us:

sales@gordonbullard.com

www.cerchiolighting.com

1 877-964-4646

| |
|-----------|
| PROJECT |
| SPEC TYPE |
| NOTES |

HOW TO ORDER:

CODE

Example:
CODE: SL-G70-D70-65W-IN-GF-PIC003-TUB0010-OG

SL-G70

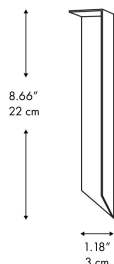
5 COMPONENTS:

-PIC003 EARTH SPIKE

Material: steel silver

Weight: 0,5 Kg

Note: included

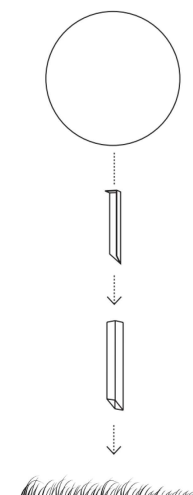
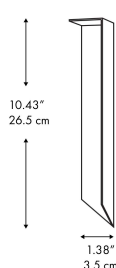


-TUB001 TRACK FOR EARTH SPIKE

Material: steel silver

Weight: 0,5 Kg

Note: not included

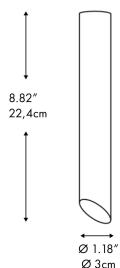


-TUB002 EARTH SPIKE

Material: steel silver

Weight: 0,1 Kg

Note: not included

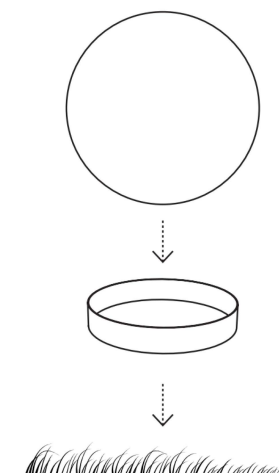
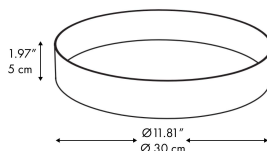


-PIC003 METAL RING (for Globo 60,70,80)

Material: steel silver

Weight: 0,5 Kg

Note: not included



| |
|-----------|
| PROJECT |
| SPEC TYPE |
| NOTES |

HOW TO ORDER:

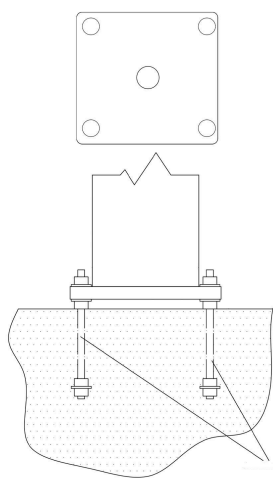
CODE

Example:
CODE: SL-G70-D70-65W-IN-GF-PIC003-TUB0010-OG

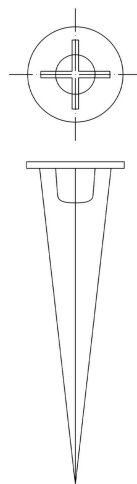
SL-G70

6 ADDITIONAL MOUNTING OPTIONS:

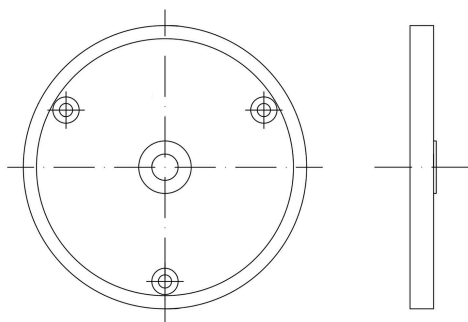
-KB Cement anchor bolts



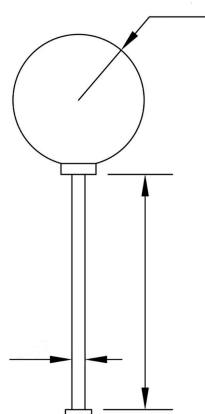
-OG Ground stake



-AF Plate with screws



-QR Pole mounting + (one of 3 other options)



pipe diameter 3" for GLOBO:
11.81" (30 cm) / 15.75" (40 cm)
23.62" (60 cm) / 31.50" (80 cm)

pipe diameter 6" for GLOBO:
47.24" (120 cm) / 78.74" (200 cm)

Note*: Custom Sizes of Pole on request starting from 3 inches