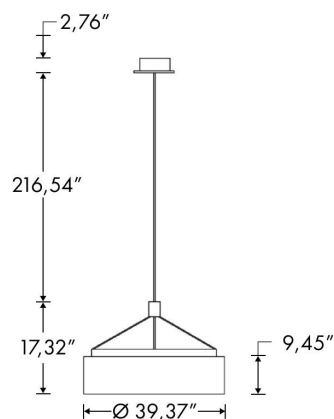
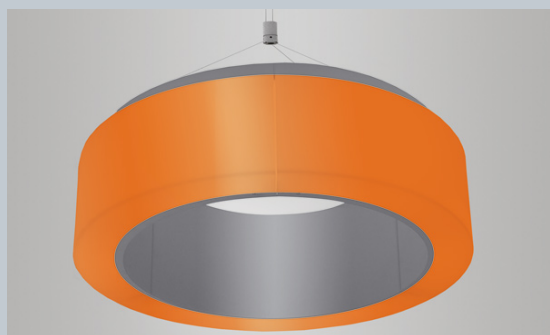




PROJECT

SPEC TYPE

NOTES



LED



IP20



GENERAL INFORMATION:

The BUBBLE 1000 RGB DMX seamlessly integrates lighting effects with its design, exhibiting a shape that adapts independently to the light beam direction and effortlessly blends into any setting, providing ample room for architectural creativity.

The Bubble 1000 RGB DMX has a size of 39 inches and RGB LED with DMX interface.

OPTICS:

Smooth opal polycarbonate diffuser, injection-molded, shock-resistant, and anti-aging.

FINISHING:

Matt White

BODY:

Round metal frame, seats for the electrical components and anchor points for the suspension device and diffusers.

VOLTAGE:

110-277V



LIGHTING:

LED RGB



LIGHTING EFFICIENCY:

≥ 60 lm/w

IP RATING:

20

IP20

APPLIANCE CLASS:

III



PROJECT

SPEC TYPE

NOTES

HOW TO ORDER:

CODE

Example:

C-15SC1-FE-S-D39-7-5-115W-RGB-DMX-E-AE-CS-PS

C-15SC1

1 LIGHT DISTRIBUTION:

-FE Full Effect



-FE

2 INSTALLATION TYPE:

-S Suspended

-S

3 CIRCLE DIAMETER:

-D39 39"

-D39

4 SIDE PROFILE HEIGHT:

-7-5 7.5"

-7-5

5 POWER:

-115W 115 Watts

-115W

6 SPECIFY LIGHT SOURCE TYPE:

-RGB RGW / 3,456 lm



-RGB

7 CONTROL SYSTEM:

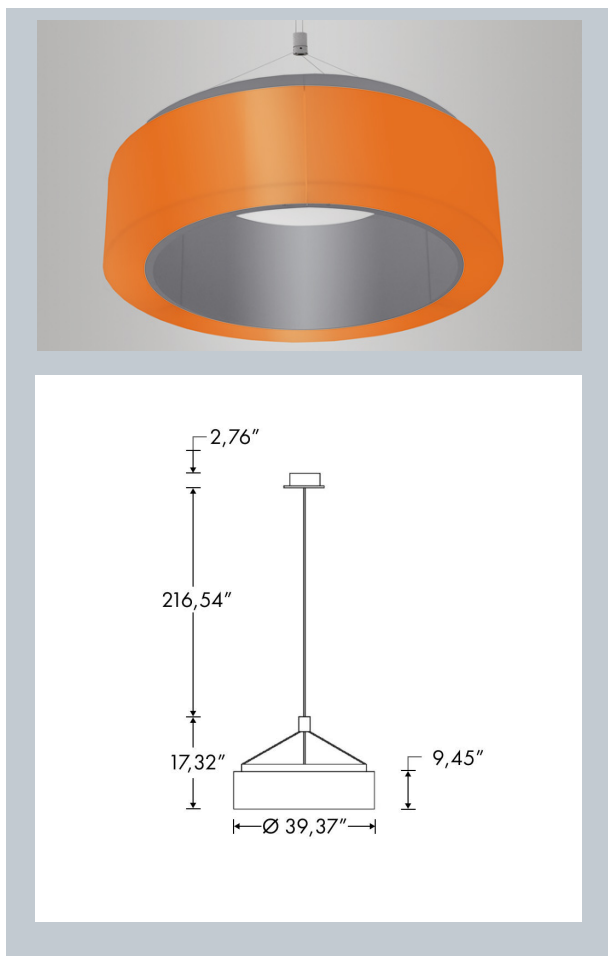
-DMX-E Easy Touch DMX512 controller with outer 9-24V-AC/DC adapter

-DMX-PRO Pro Touch DMX512 programmable controller with outer 5-12V-AC/DC adapter

8 FIXTURE FINISH:

-AE Matt White

-AE



LED



IP20



PROJECT

SPEC TYPE

NOTES

HOW TO ORDER:

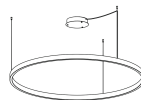
CODE

Example:

C-15SC1-FE-S-D39-7-5-115W-RGB-DMX-E-AE-CS-PS

C-15SW1

9 CANOPY OPTIONS:



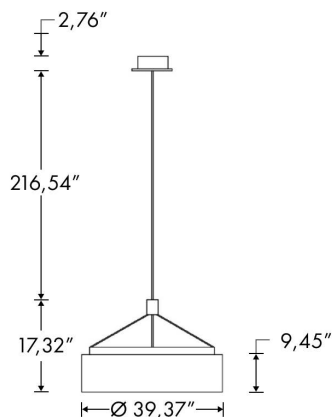
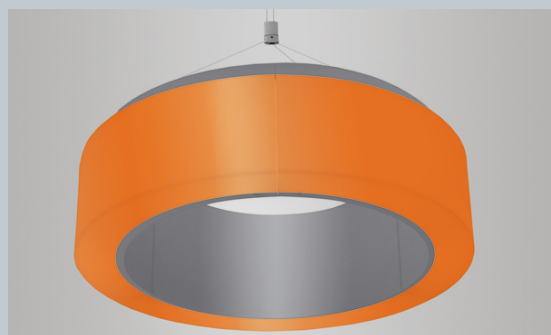
-CS
cable
straight



-NSR
nexus central
standard

10 ADDITIONAL ACCESSORY:

-PS ON-OFF power supply designed to mount on a DIN standard profile 120W - Vin = 100~264V-AC 47~63 Hz Vout = 24V



WWW.BULLARDCOLLECTION.COM

OUTDOOR

TECHNICAL

DECORATIVE



WE WELCOME ALL CUSTOM ORDERS

Contact Us:

sales@gordonbullard.com

www.cerchiolighting.com

1 877-964-4646